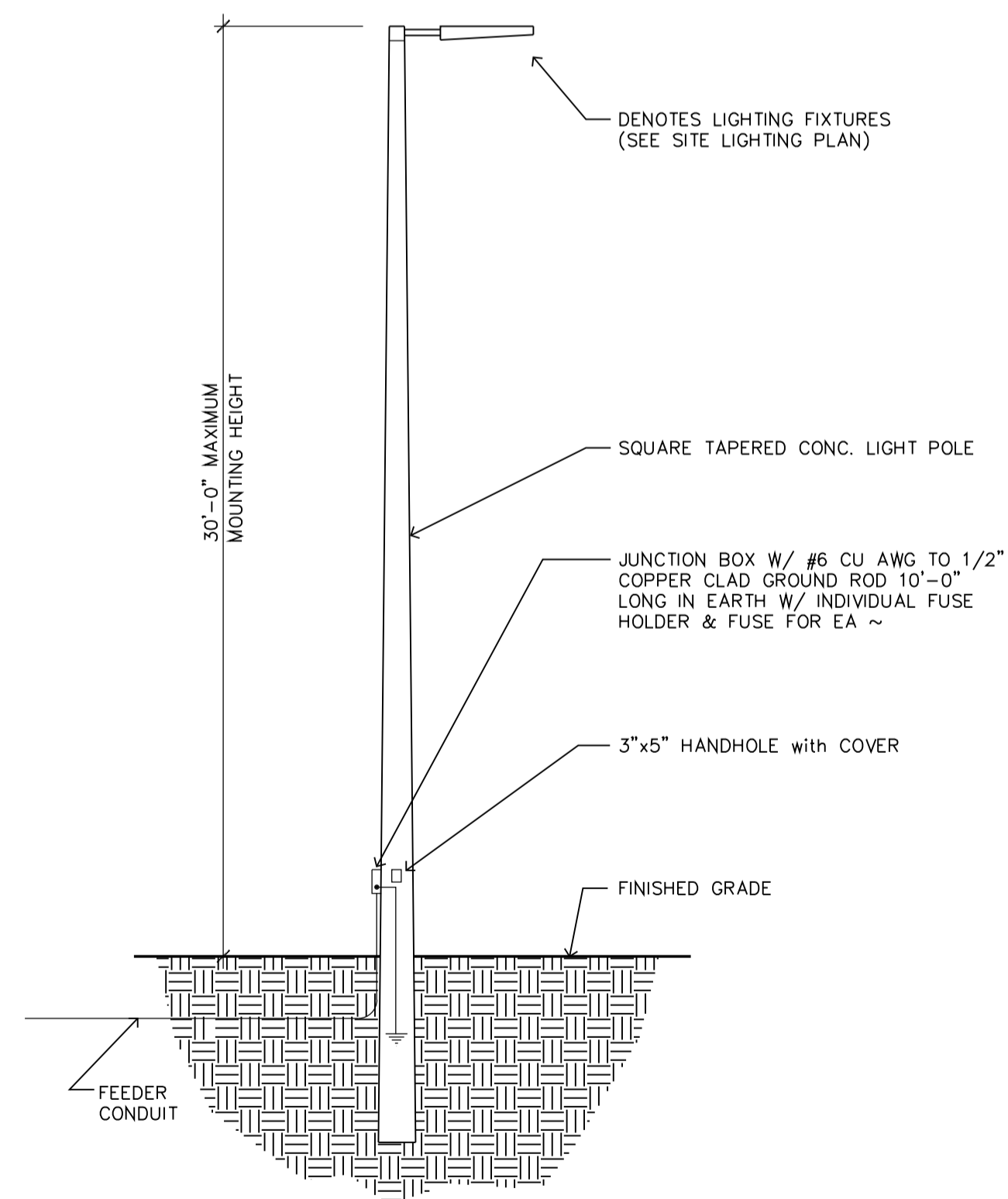
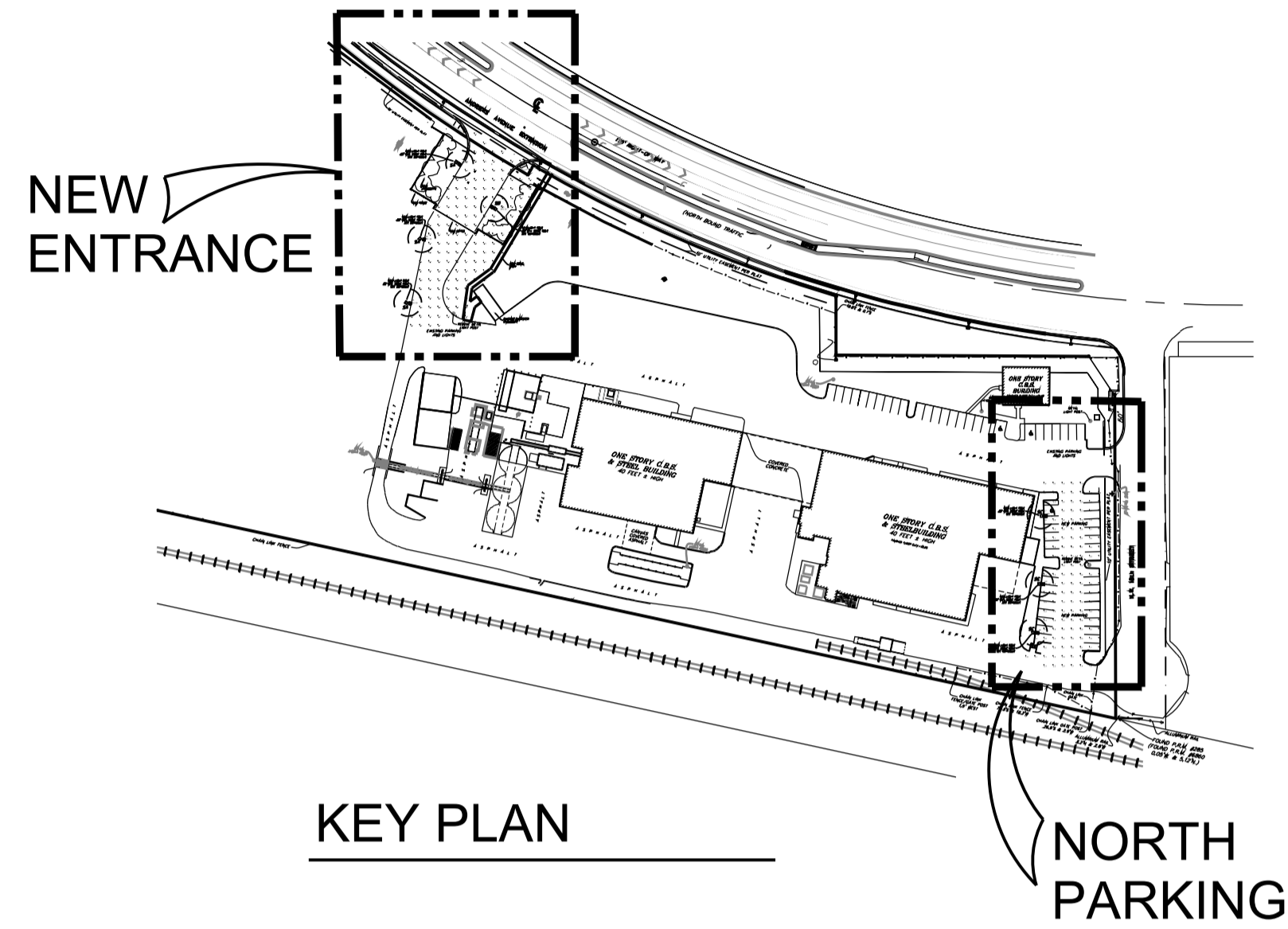
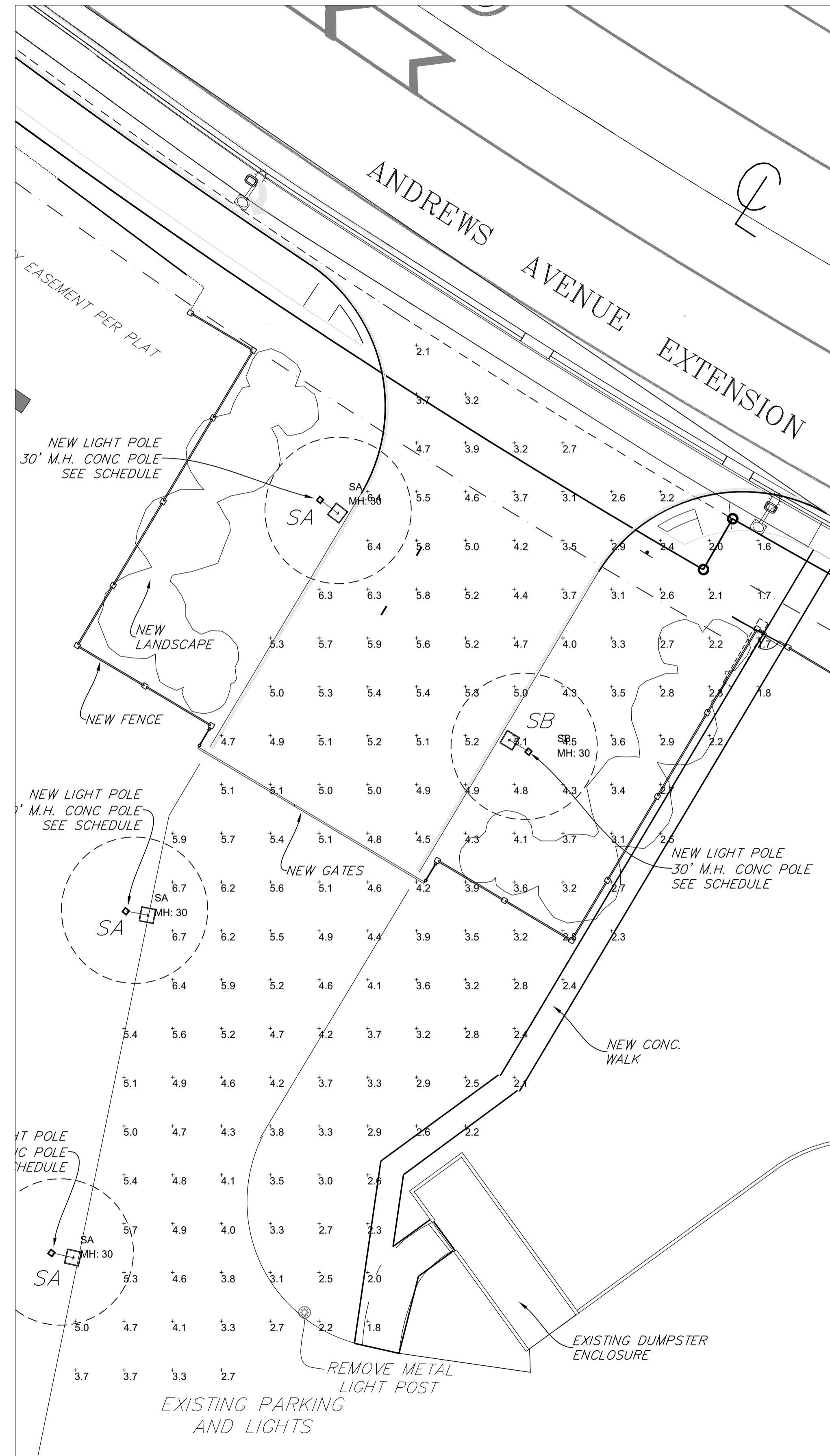


[illegible]

SUPPLIER OF POLES SHALL SUBMIT ENGINEERED SHOP DRAWINGS SIGNED & SEALED BY A REGISTERED PROFESSIONAL ENGINEER SIZED FOR THE EFFECTIVE PROJECTED AREA (EPA) OF THE LIGHT FIXTURES ULTIMATELY INSTALLED AND SHALL DETERMINE THE REQUIRED POLE EMBEDMENT DEPTH FOR THE CODE REQUIRED WIND VELOCITY PRESSURE

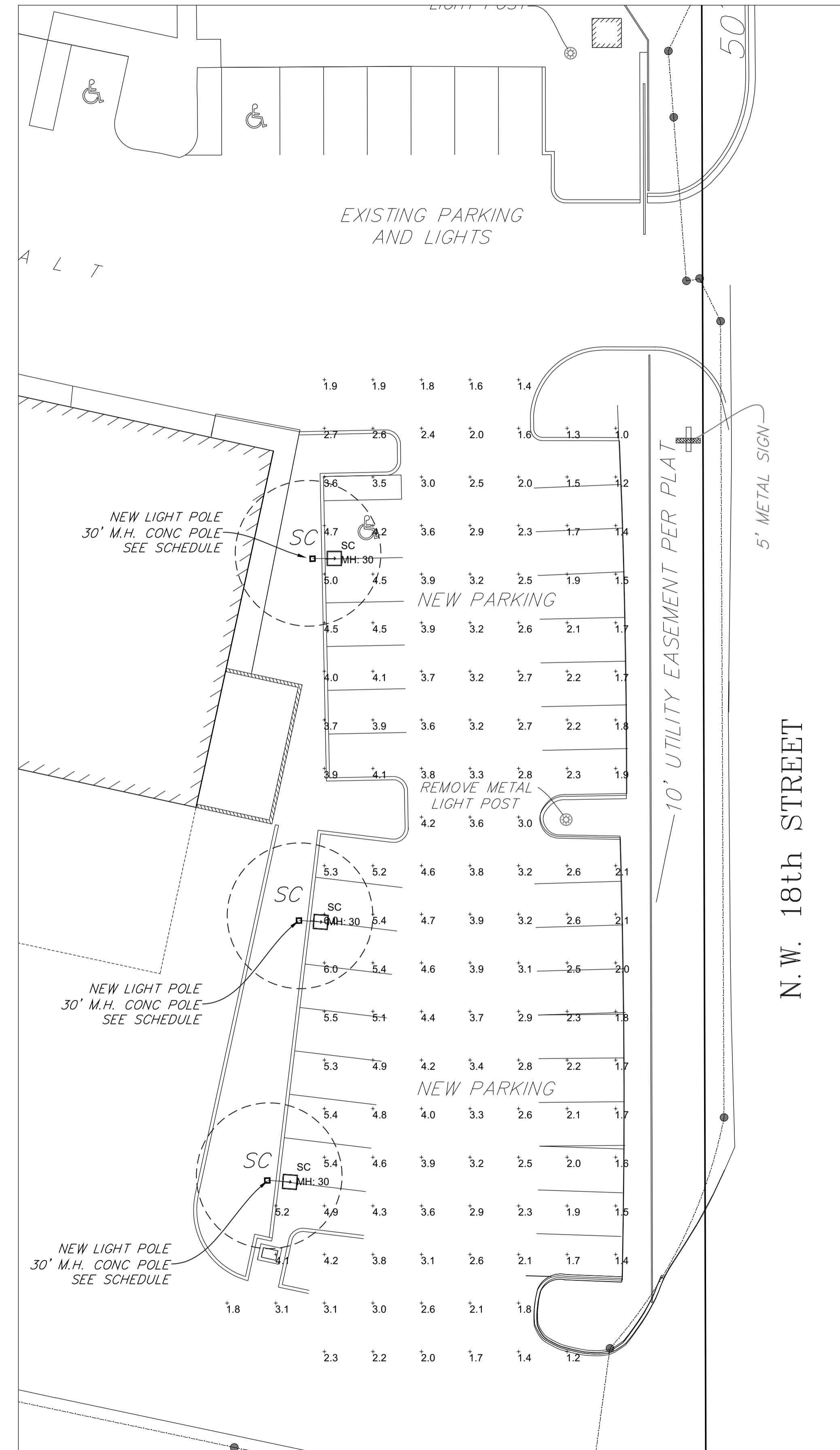
② LIGHT POLE DETAIL

SCALE 1/4" = 1'-0"



PARTIAL SITE LIGHTS PHOTOMETRIC PLAN NEW ENTRANCE

SCALE $\frac{1}{16}" = 1'-0"$ FOR FURTHER INFORMATION, SEE PLANS BY WINNINGHAM & FRADLEY, ENGINEERS.
AND MCLAGHLIN ENGINEERING FOR SURVEY.



PARTIAL SITE LIGHT PHOTOMETRIC PLAN NORTH PARKING

SCALE $\frac{1}{16}'' = 1'-0''$